

ALSTEF GROUP

AIRPORT, WAREHOUSING, AND PARCEL AUTOMATION SOLUTIONS



**BEYOND
AUTOMATION**





OUR SOLUTIONS

BAGGAGE, AIR CARGO, WAREHOUSING & DISTRIBUTION, AND PARCEL HANDLING AUTOMATION SOLUTIONS

Alstef Group, a global leader in designing, integrating, and supporting automated turnkey solutions for the airport, intralogistics, and parcel handling markets, is driven by a powerful mission. Our goal is to create **intelligent solutions** that not only meet the immediate needs of our customers but also provide them with **sustainable, tailor-made automated systems** that are eco-designed, **highly efficient, scalable**, and brimming with **innovation**.

With a local presence in **18 countries** and a wide range of systems installed in **93 countries** across **six continents**, Alstef Group is a force to be reckoned with in the materials handling industries on a global scale. We stand firmly committed to **delivering excellence**, both to our dedicated employees and to our valued customers. Our unwavering dedication drives us to surpass customer expectations and continually exceed their evolving needs.

OUR ONGOING CSR COMMITMENTS:

- Eco-conscious product design and a procurement policy that emphasizes environmentally responsible choices
- Prioritizing and advocating for products with minimal environmental footprints
- Driving responsible consumption and waste management and incorporation energy-saving measures
- Strategically designing our supply chain based on environmental criteria to minimize our ecological impact
- Evolving our mobility plan with a strong focus on advocating the use of public transportation, electric vehicles, carpooling, or sustainable means of commuting



GROUP WORKFORCE: 950+ EMPLOYEES



R&D DESIGN
SOFTWARE



250+



SALES
PROJECT DESIGN



65+



PROJECT
MANAGEMENT
COMMISSIONING



150+



PURCHASING
SUPPLY CHAIN
PRODUCTION



85+



MAINTENANCE
OPERATION



360+



SUPPORT
SERVICES



55+

OUR VALUES

OUR GUIDING PRINCIPLES THAT HELP DRIVE US TOWARDS
OUR COMMON GOALS

CUSTOMER FOCUS

Understand, support & satisfy our customers by building a long-term relationship of trust

TEAM SPIRIT

Promote collaboration and solidarity among employees to drive collective success and accomplish shared objectives

COMMITMENT

Fully dedicate ourselves to ensuring the success of our clients' projects

KNOW HOW

Promote the development of technical expertise and share our skills with new talents

INNOVATION

Develop innovative solutions to meet the present and future needs of our customers

A GREAT PLACE TO WORK EVERYDAY, EVERYWHERE, FOR EVERYONE



BAGGAGE HANDLING SOLUTIONS

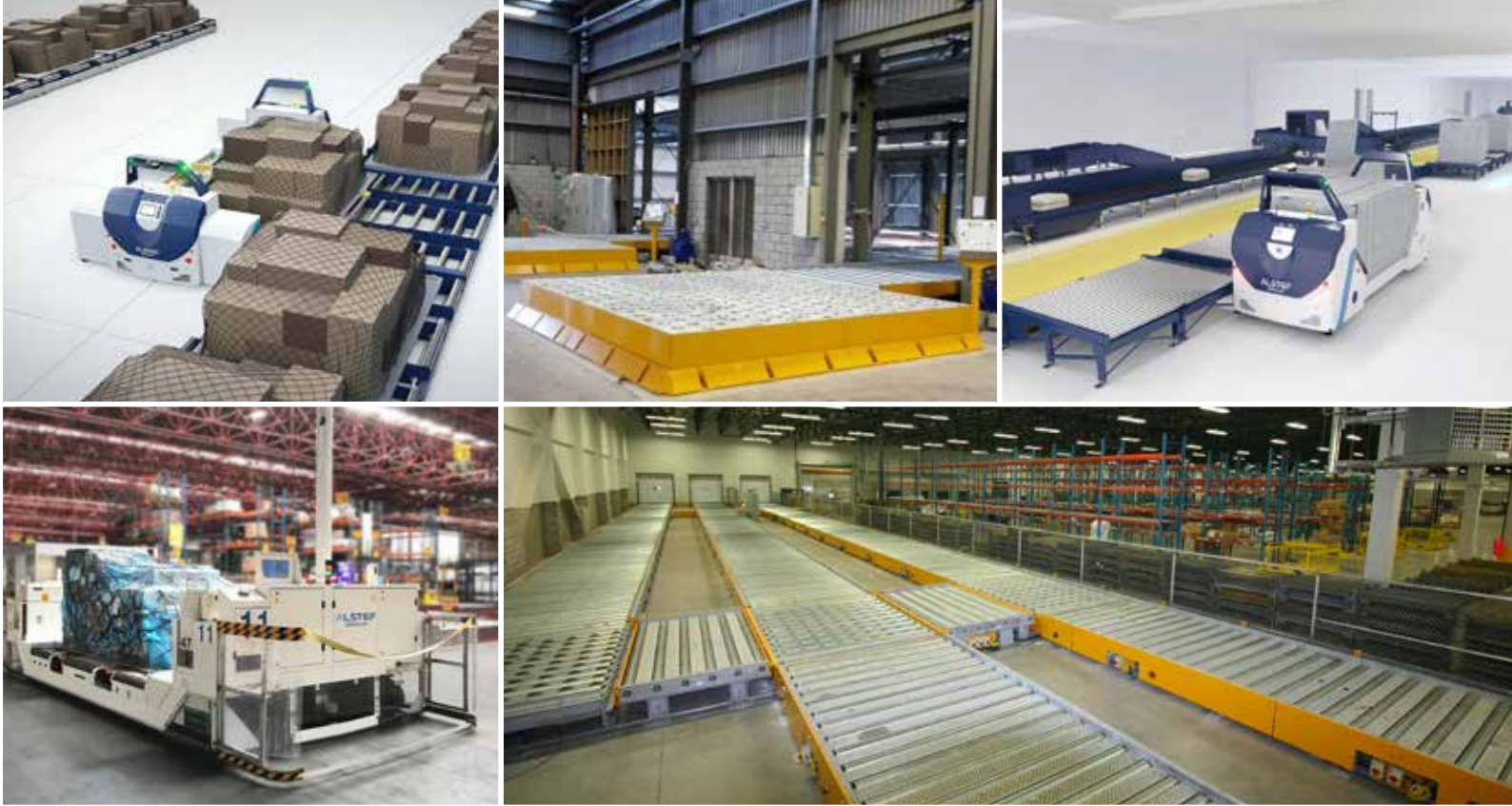
A COMPREHENSIVE RANGE FOR CHECK-IN, TRANSPORT, HIGH-SPEED SORTATION, STORAGE, MAKE-UP, RECLAIM AND CONTROL

From small airports to major hubs, Alstef Group has been delivering baggage handling systems, solutions, and support to airports globally for over 60 years. Throughout this time, we have made it a top priority to ensure the compliance of our systems with changing safety regulations and IATA guidelines. We possess extensive experience in undertaking retrofit projects, adeptly navigating the challenges inherent in operational airports, and excelling at minimizing impacts on ongoing operations.

Alstef Group tailors solutions from a customized suite of integrated, modular products, and automation control software technologies. These solutions are meticulously designed, configured, and quality assured before shipping, facilitating seamless on-site installation, commissioning, and simplified ongoing maintenance.

Our latest innovations include the BAGXONE AGV, a high-speed autonomous guided vehicle designed to optimise baggage transport with precision and reliability, and the XSORT cross-belt sorter, engineered for rapid, high-throughput sorting with exceptional accuracy.





AIR CARGO HANDLING SOLUTIONS

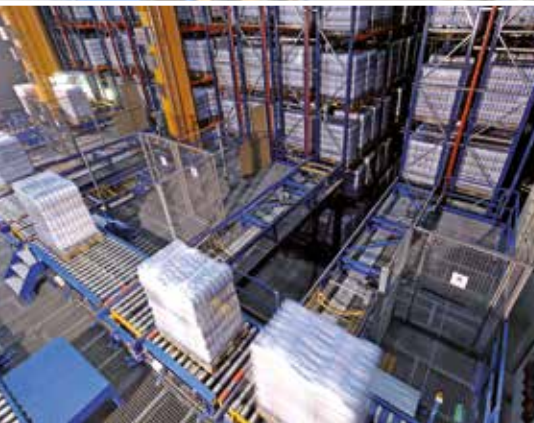
HOLISTIC SOLUTIONS TO OPTIMISE YOUR TERMINAL ACTIVITIES

Alstef Group offers comprehensive solutions designed to optimize flows within your terminal and enhance productivity.

Through our global partnership with SACO, a renowned specialist in air cargo ULD handling and storage equipment, we provide a seamless end-to-end cargo handling system. This partnership enables us to amalgamate our expertise and resources, delivering tailor-made solutions that meet your specific requirements.

Our team of experts will closely collaborate with you throughout the entire process, from the initial planning stages to the final implementation. We carefully consider the unique needs and challenges of your air cargo terminal, ensuring that our solutions are customized to maximize efficiency and minimize disruptions.





INTRALOGISTICS SOLUTIONS

TURNKEY SOLUTIONS FOR TRANSFER, STORAGE, AND ORDER PREPARATION

For decades, Alstef Group has excelled in designing, manufacturing, and installing internal logistics flow management solutions for distribution centers and production sites.

Our mission is to fulfill our customers' diverse flow and storage requirements by developing comprehensive logistics systems tailored to their specific needs. We aim to create solutions composed of technologies precisely adapted to individual customer demands, ensuring they meet their objectives and accommodate changes in their operational activities.

Leveraging our extensive experience and profound understanding of industrial processes, we integrate these capabilities into our pre-sales and project management endeavors, offering guidance, designing solutions, conducting simulations, and performing detailed logistics analyses.





POST, PARCEL & RETAIL LOGISTICS SOLUTIONS

AUTOMATION SOLUTIONS FOR POSTAL, COURIER, E-COMMERCE, AND RETAIL WAREHOUSING, AND DISTRIBUTION FACILITIES

Alstef Group offers modular, scalable post and parcel handling solutions, ranging from simple dimension checking, weighing, scanning, and manual sorting to fully automated parcel sortation systems. We collaborate closely with our clients in the early project stages to ensure the provision of the most efficient solutions that meet all design criteria and operational requirements. This dedication to a customer-focused approach continues throughout the project's development and implementation phases, ensuring the attainment of critical milestones while maintaining a high level of safety. We also provide flexibility and expandability to accommodate changing needs.

Alstef Group boasts extensive experience integrating various types of sorters, including bombay, linear or loop cross-belt, shoe, tray, multi-belt, modular, and swivel-wheel sorter solutions. Additionally, we collaborate with other industry leaders to offer a diverse range of sorters and related technologies, ensuring the delivery of reliable, versatile, and durable systems.





SYSTEM ENGINEERING AND CONTROL

SOFTWARE CONTROL SOLUTIONS FOR SYSTEM OPERATION, MANAGEMENT, DATA ANALYSIS AND REPORTING



DATA ANALYSIS



CONSULTING AND SYSTEM DESIGN



SIMULATIONS AND EMULATIONS

Alstef Group has the in-house expertise to analyze customer data and requirements to design the optimal solution for your automation needs.

Our teams can simulate the solution to optimize the layout design. Emulation allows for full system testing and commissioning before installation, reducing site time, and this digital replica can be maintained post-completion.

Our global software suites—OPAL for intralogistics and air cargo, BAGWARE for baggage handling, and FASTSUITE for parcel handling—control the overall system to optimize flows, sortation, storage, AGV fleets, transit, and order preparation management. They provide system visualization, data analysis, operational tools, and comprehensive reporting.

BAGware **OPAL** **FASTsuite**



CYBERSECURITY

A HOLISTIC APPROACH TO SECURING YOUR INFRASTRUCTURE

Today, the question is no longer 'if' but 'when' a cyber attack will occur. The implementation of cybersecurity governance is essential to detect threats and maintain the security of facilities.

We adapt our IT infrastructure and services to address the latest cybersecurity issues while continuing to guarantee the reliability of our systems. By working closely with our customers, we can quickly respond to operational requirements while maintaining the security of the IoT.





OUR SERVICE OFFER

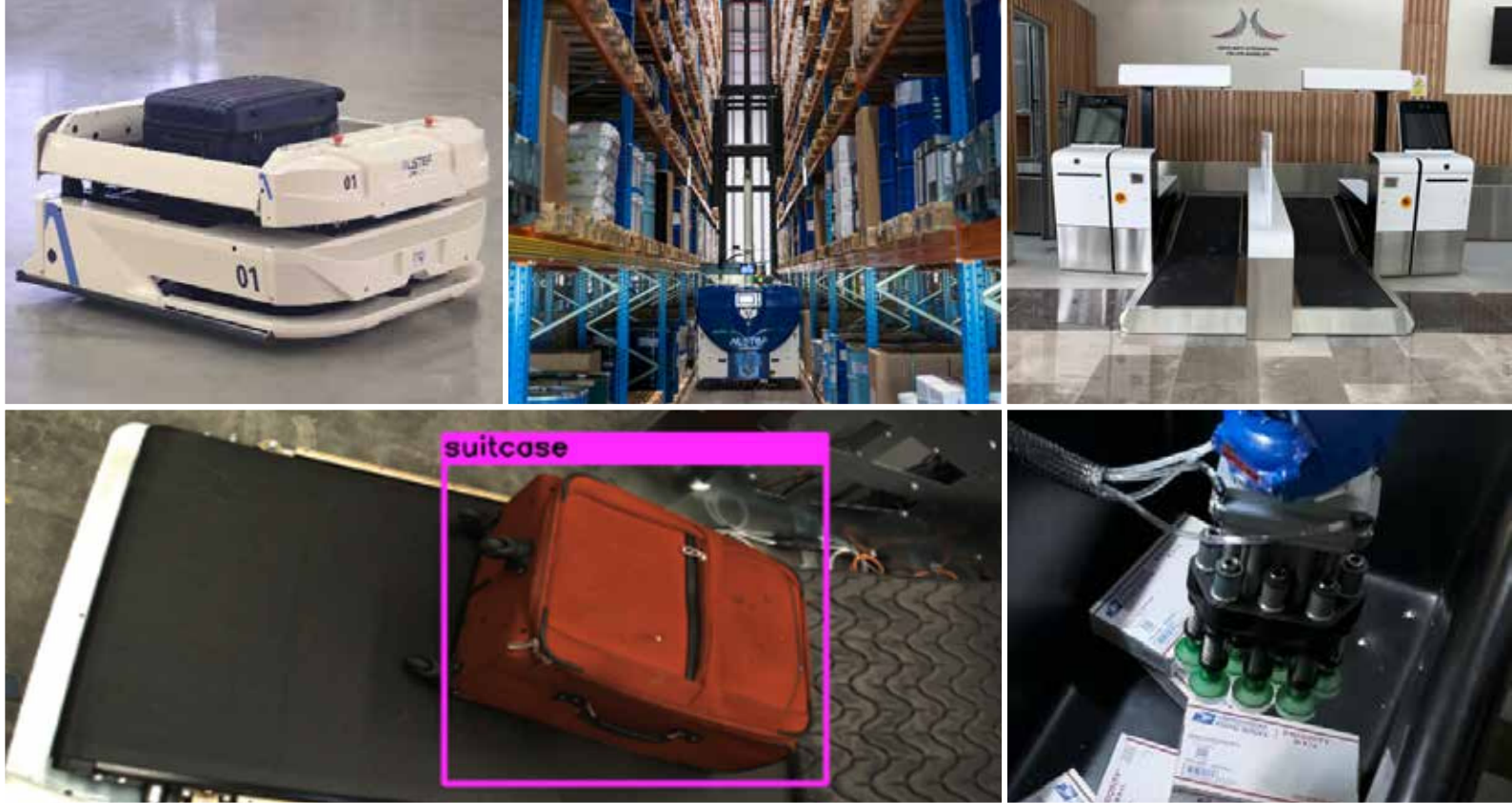
COMPREHENSIVE SUPPORT SOLUTIONS INCLUDING SITE-BASED TEAMS, FIRST LINE RESPONSE, PERIODIC MAINTENANCE AND 24/7 HOTLINE SUPPORT

Beyond installation, Alstef Group offers a comprehensive range of support solutions to extend the life of your system. From site-based operations and maintenance teams for airports, ongoing preventative and corrective maintenance support, 24/7 hotline assistance, and training programs for operators, Alstef Group can ensure downtime is minimized, and productivity is enhanced.

Our predictive maintenance solution further extends the life of your product by anticipating failures, detecting risks of breakage, and aiding in reorganizing maintenance activity in real-time to ensure the smooth operation of your system.

Our Maintenance Engineering solutions assist in tracking, planning, maintaining, and monitoring through our Computer-Assisted Maintenance Management Software (CMMS) – CarlSource.

Our 24-hour remote support provides immediate online system monitoring to support onsite operations crews, and our global network provides fast and easy access to spare parts and qualified technicians to keep your system operational.



OUR INNOVATIONS

INNOVATION IS AT THE HEART OF THE GROUP'S DEVELOPMENT TO MEET OUR CUSTOMERS' CHALLENGES

Alstef Group's commitment to innovation and the pursuit of pioneering technologies that revolutionize how industries manage their operations is evident through our dedication to developing cutting-edge automated systems, integrating robotics, artificial intelligence, and advanced software solutions.

By leveraging the latest technological advancements, Alstef Group strives to address the evolving needs of modern industries. Our emphasis on innovation extends beyond the mere creation of products; we aim to prioritize solutions that optimize efficiency, enhance precision, and streamline workflows. Whether designing intricate warehouse management systems, implementing conveyor and sorting solutions, or harnessing AI to create intelligent and adaptive systems, Alstef Group consistently pioneers innovations that redefine the landscape of logistics and material handling.

This commitment to staying at the forefront of technological progress underscores our position as a global leader, trusted by industries seeking forward-thinking solutions to propel their operations into the future.



OUR GLOBAL PRESENCE

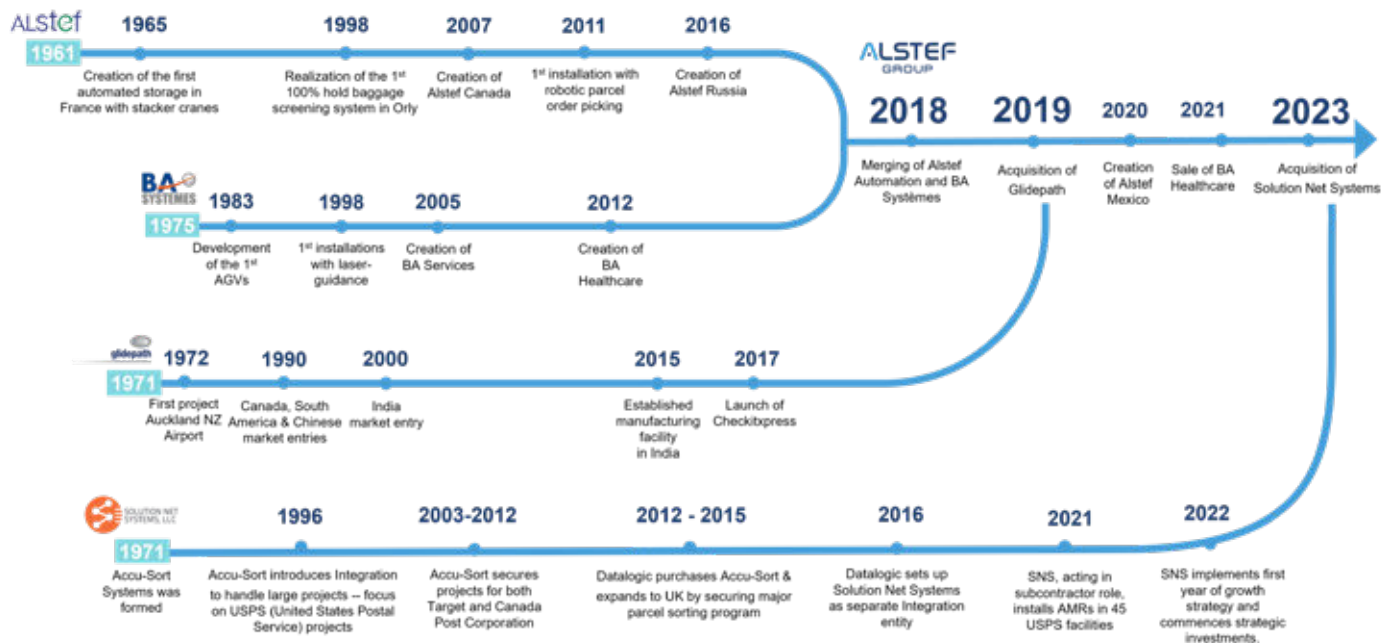
16 REGIONAL OFFICES AND SYSTEMS INSTALLED IN 93 COUNTRIES





OUR HISTORY

MORE THAN 60 YEARS EXPERIENCE IN MATERIALS HANDLING





OUR CSR APPROACH

SOCIAL AND COMMUNITY ACTIONS



Developing our ethical actions

Sustainable purchasing and ethical business policies



Supporting local associations

Sponsoring associations led by our employees, hosting beehives



Training and raising awareness

HSE policy, disability awareness workshops, Sustainable Transport Week



Promoting Quality of Life at work

Numerous events and activities, sponsorship program, premises upgrades, and Great Place to Work certification





OUR CSR APPROACH

ECO-DESIGN AND SUSTAINABILITY



Eco-design of our systems, to offer more durable and sustainable solutions



Wave Concept: optimized motor usage for airport conveyors



Management intelligence and flow optimization to minimize reorganization movements



Integration of **energy developments** in the design of our standards



On-board energy recovery systems on our stacker cranes and storage AGV GT16



Liner-less label print and apply solutions saves on wasted labels and label backings

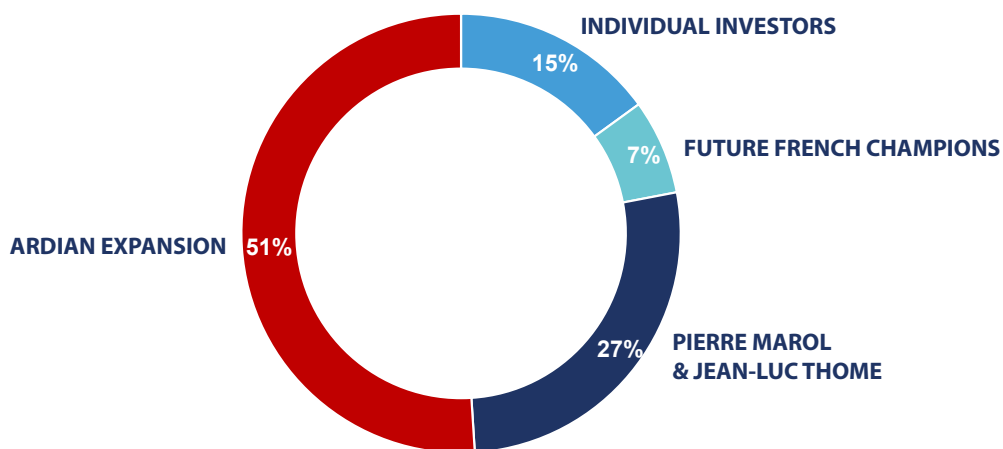


OUR SHAREHOLDING

INVESTING IN OUR FUTURE

Alstef Group has developed a share purchasing scheme that makes shares in the Alstef Group accessible to every permanent employee in our organisation.

Our share scheme creates a platform to enhance performance by aligning our employees' interests with those of our business.





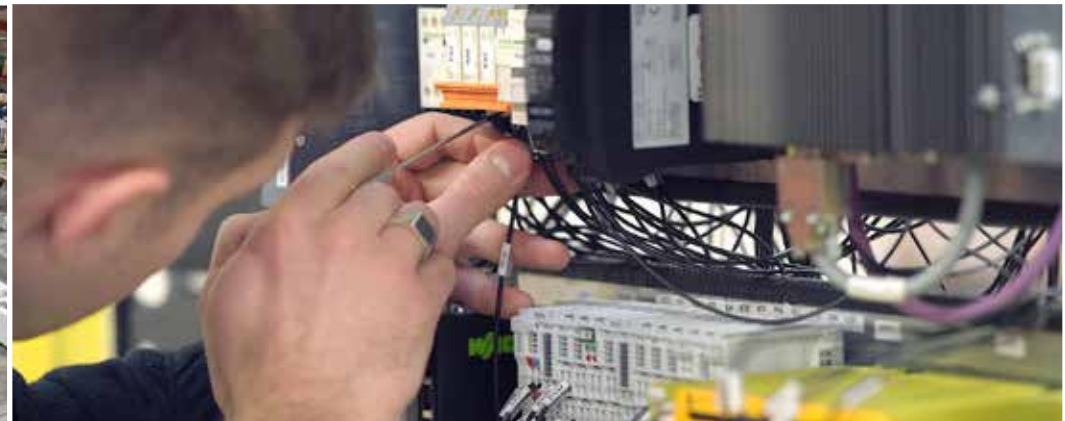
OUR GROWTH

AN EVOLUTIONARY JOURNEY

We are dedicated to fostering continuous growth and expansion within our business through innovation and strategic development initiatives.

Our commitment to scaling the business includes leveraging market opportunities, nurturing talent, and embracing transformative technologies to drive sustained success.





OUR FACILITIES

GLOBAL CENTERS OF EXCELLENCE



Alstef Group takes pride in its world-class production and assembly facilities strategically located across the globe. What sets our facilities apart is the meticulous ISO-based quality control that governs every aspect of our production and assembly processes. These controls ensure that our solutions meet the highest industry standards, offering reliability, durability, and performance that our clients can trust.

- 5000 m² facility, Orléans, France
- 8000 m² facility, Rennes, France
- 3000 m² facility, Auckland, New Zealand
- 4500 m² facility, Pune, India
- 1600 m² facility, Quakertown, PA, USA



WHAT OUR CUSTOMERS SAY ABOUT US

89% CUSTOMER SATISFACTION LEVEL IN 2023 SURVEY

“It’s essential to rely on high-quality providers, and our project has confirmed that you are just that.

*Yves Lallauret, Technical Manager
Bonduelle*

“ We already recommend you.

*Jérôme M., Supply Chain Manager
Jus de Fruits d’Alsace*

“ Alstef Group is one of the world’s leading companies in BHS and was the best option in terms of costs, design, parts, durability and proposal.

*Juan M., Coordinator of Specialized Airport Services
Aeropuerto Felipe Angeles, Mexico*

“ Reactivity, flexibility, proximity, customer focus, quality of the relationship and exchanges, expertise of the teams.

*Emmanuel L., Project Director
Paris Airports (ADP), France*

“ If I had to install AGVs again, I would chose the same ones.

*Frédéric H., Stock and Logistics Manager
Smoby*

“ We believe that we have the best possible partner.

*Jesus Caballero, CEO
Sofia Airport, Bulgaria*

ALSTEF GROUP



CUSTOMER FOCUS



INNOVATION



KNOW-HOW



COMMITMENT

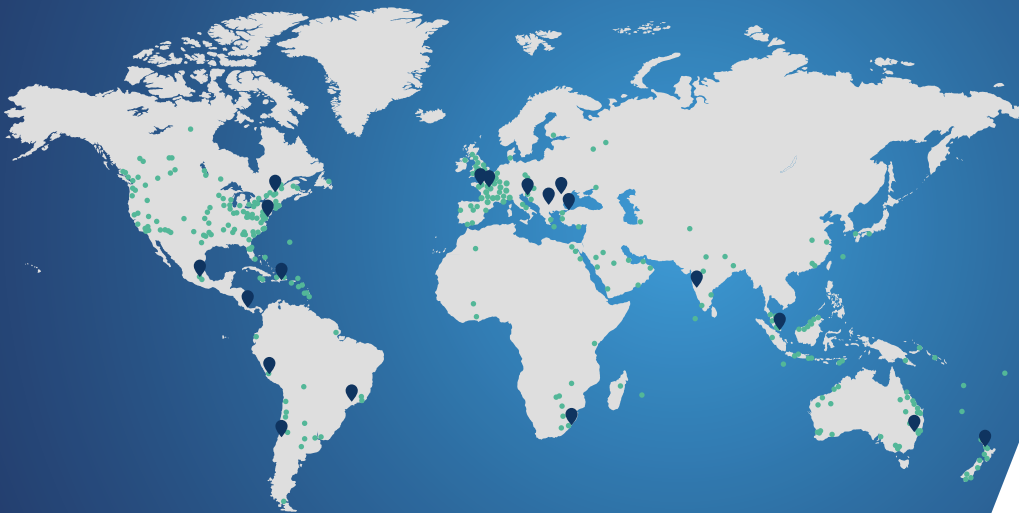
ALSTEF
GROUP

VALUES



TEAM SPIRIT

FRANCE | NEW ZEALAND | USA | AUSTRALIA | CANADA | INDIA | CHILE | MEXICO | PERU | CROATIA | ROMANIA
BULGARIA | TURKEY | BRAZIL | SOUTH AFRICA | SINGAPORE | COSTA RICA | DOMINICAN REPUBLIC



www.alstefgroup.com